



---

# THE SMITH TECH PACK

---

EDITION 1.3

---

EDWARD C. SMITH

---

CIVIC CENTER

arts • community • culture

OCTOBER 17, 2023  
EDWARD C. SMITH CIVIC CENTER  
271. S MAIN ST.

# EDWARD C SMITH CIVIC CENTER TECH PACK (1.3)

## HISTORY OF THE THEATRE:

With a glittering marquee and Mirrophonic-Deluxe sound system, The Carolina Theatre opened in 1948 in downtown Lexington as the finest, most attractive and comfortable motion picture theater in the Carolinas. Everything modern and ultra-modern attainable went into the construction of the building and into the equipment.

In 1976 a group of dedicated individuals, led by local businessman Edward “Eddie” C. Smith, raised funds and purchased the Carolina Theatre from ABC Southeastern Theaters. They then transferred ownership of the building to the City of Lexington. The building underwent a detailed restoration and reopened as the Lexington Civic Center in May 1980.

In 1987 Eddie Smith purchased the neighboring building (Green Printing) and donated it to the City of Lexington. This building was united with the Civic Center adding a ballroom, dressing rooms and scene shop. Since then, several renovations have taken place throughout the building including new seats, a hydraulic orchestra pit, and updated lighting and sound systems.

In 1995, during the Civic Center’s 15th anniversary celebration, the Lexington City Council formally renamed the facility the Edward C. Smith Civic Center of Lexington. Eddie Smith had worked as an usher at the Carolina Theatre and met his wife there, and he dedicated much of his life to the restoration and overall success of the Civic Center. In 1998, Smith led the “Set the Stage” campaign that raised the Civic Center to the professional level for modern performances.

Since 2017, The Edward C. Smith Civic Center was rebranded to “The Smith” and has undergone many renovations and additions, including: A brand new digital Marquee, The Gallery in the main lobby with the addition of 14 bathrooms, The Annex- a small reception space next to the entrance, as well as multiple overhauls to the main theater hall involving the sound and lighting systems.

The Smith also has an additional scene shop in the basement.

The Civic Center’s facilities include an 1,100-seat auditorium (700 orchestra level, 400 balcony level), a lobby, and a ballroom with capacity for up to 150.

## STAGE DIMENSIONS

### STAGE

- 32’ Deep (Down Center to Up Center)
- 37’ 10” Across (Stage Left to Stage Right)

### HYDRAULIC PIT

- 32’ Across (Stage Left to Stage Right)
- 10’ 6” Deep at Center (Down stage Center to Upstage Center)
- 8’ 8” Deep at Edge (Downstage Left to Upstage Left)

## EDWARD C SMITH CIVIC CENTER TECH PACK (1.3)

### ROOM ACOUSTICS

- Sloped Ceilings prevent flutter between the stage floor and the ceiling above it and are angled to further improve clarity and intimacy. This is especially true for unamplified events but helps for amplified ones as well.

### FLY RAIL BREAKDOWN

1. 1<sup>ST</sup> Border/Legs
2. Hanging Mics
3. 1<sup>st</sup> Electric
4. Open
5. Open
6. 2<sup>nd</sup> Border/Legs
7. Open
8. 2<sup>nd</sup> Electric
9. 3<sup>rd</sup> Legs
10. OFF LIMITS
11. 3<sup>rd</sup> Electric
12. Open
13. Open
14. Mid Stage Traveler
15. Open
16. 3<sup>rd</sup> Border
17. 4<sup>th</sup> Legs
18. 4<sup>th</sup> Electric
19. Open
20. Cyclorama
21. Upstage Traveler

#### Main Curtain

- Operates offstage Right manually

### BAY DOOR

2<sup>ND</sup> FLOOR, Stage Right direct access. FOR LOAD IN CONTACT OUR TECHNICAL DIRECTOR FOR SPECIFICS. No armature available.

## EDWARD C SMITH CIVIC CENTER TECH PACK (1.3)



### EQUIPMENT

- 5 Handheld Wireless Microphones (1X Shure SM58, 4X Sennheiser XS Wireless)
- 3 Handheld Wired Microphones
- 12 Belt Packs
- 4 Floor Microphones
- 5 Hanging Microphones
- 4 Floor Monitors (NO IN EAR SYSTEM)
- Light and Sound Boards:
  - Yamaha TF5
  - ETC Element
- Video Projector
  - NEC PA550W

### SOUND SPECIFICATIONS

- Center-hung array consisting of (4) EAW MK5164 driven by (2) Crest Audio CA9 amplifiers.
- House left and right positioned subwoofers (2) EAW BV253C driven by (1) Crest Audio CA12 Amplifier.
- Signal is split by a TDM 24CX-2 electronic crossover.
- There is an under-balcony system of (10) overhead can speakers set on a delay for a little extra reinforcement.
- Sound can also be sent to the lobby and the dressing rooms through similar speakers.
- The stage monitors are (3) Yamaha Elite EM408 wedges and (1) Yamaha Yorkville YX15 wedge. These are driven by (2) Crest Audio CA6 amplifiers.

### POWER

- 1- 20amp onstage outlet, floor pockets.
  - Phases:

### RIGGING

## EDWARD C SMITH CIVIC CENTER TECH PACK (1.3)

- NOT AVAILIABLE- DUE FOR INSPECTION

### OFFSTAGE COMMODITIES

- Dressing Rooms
  - 1 Downstairs Dressing room, personal toilet available, 4 person capacity
    - Easy access to Pit Entrance

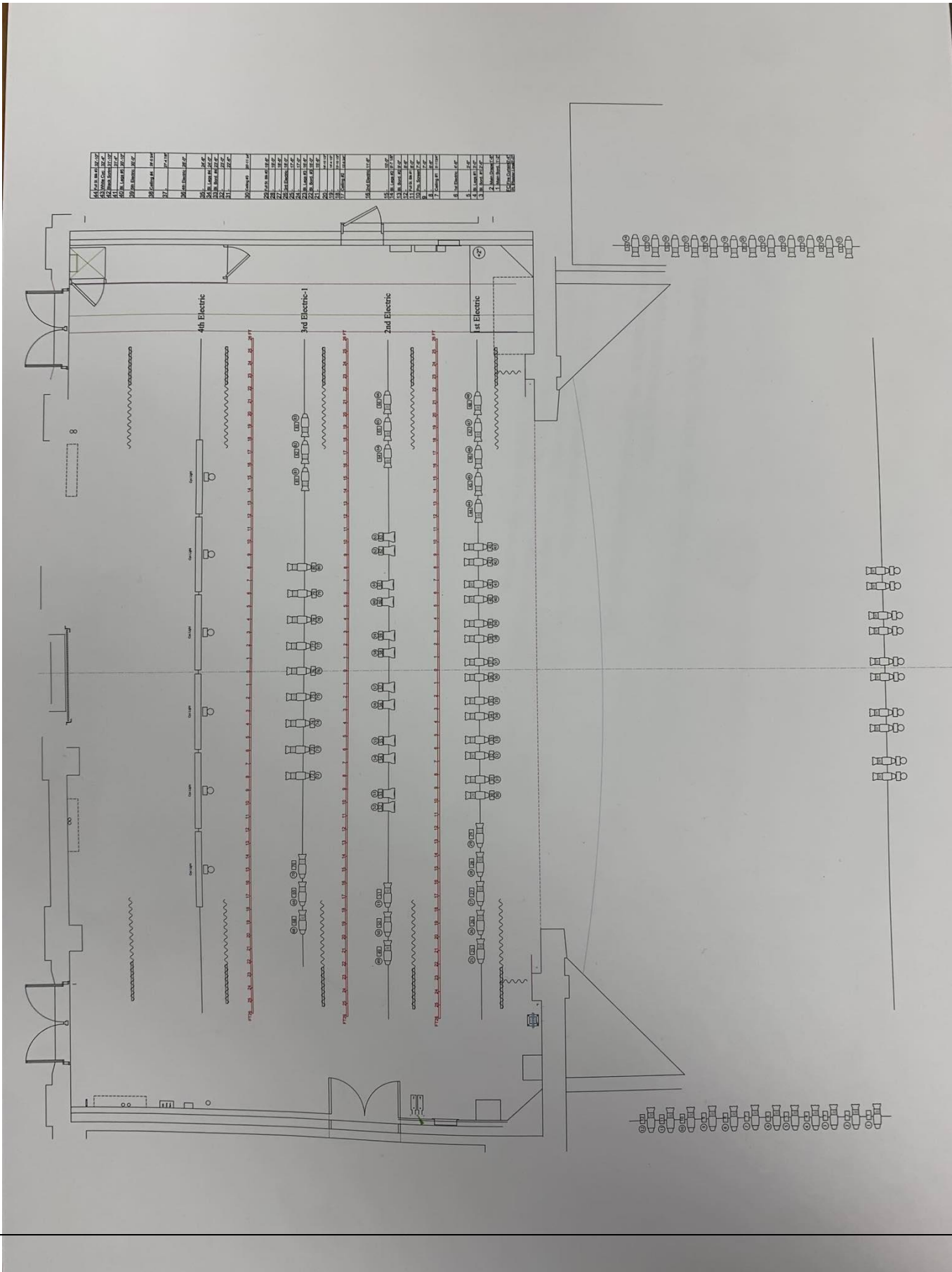


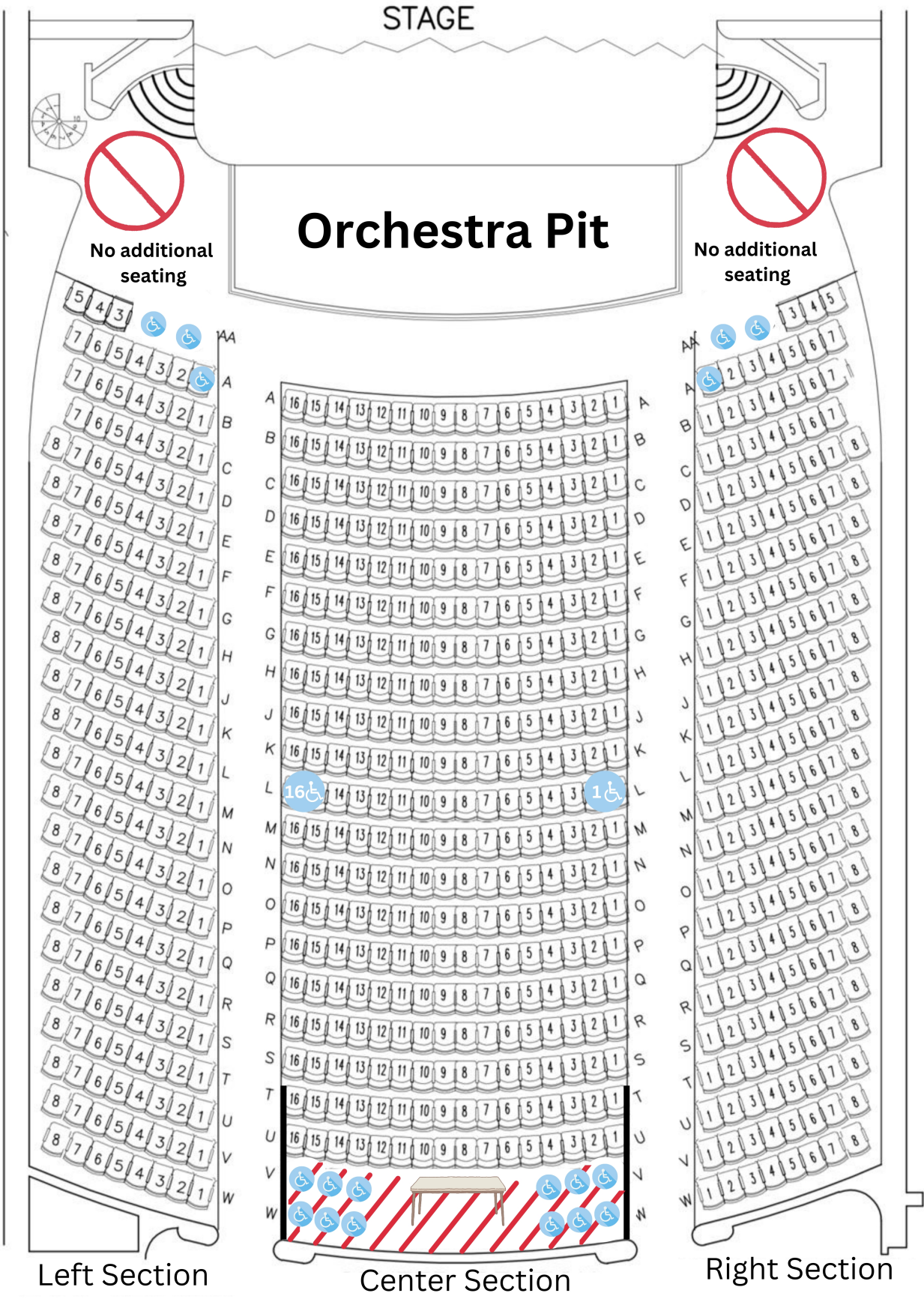
- - 4 Main Floor Dressing rooms, 2 small, 2 large.
    - ALL dressing rooms have mirrors, counters, and chairs.
    - Showers and Toilets available for performers backstage
- Green Room
  - Offstage Left, Desk and Chair available in room.
- Baldwin Mini Grand Piano
- Kitchen Available



- NO COOKING
  - In house refrigerators (2 Large), Ice Maker, Microwave, Sinks, Ovens available  
(COMMUNICATE WITH EXECUTIVE DIRECTOR FOR SPECIFIC USE)
- Storage and Rehearsal- Storage is very limited onstage. Due to the lack of onsite storage, no shipments shall be accepted without prior approval from the Technical Director.

# EDWARD C SMITH CIVIC CENTER TECH PACK (1.3)





# Edward C. Smith Civic Center: Seating Chart



Wheelchair accessible seating



No seating



Tech table available upon request



Additional and/or wheelchair seating